

Magnetically Compensated Choke, 1- and 3-phase

**Description**

- Current compensated choke
- 1- or 3-phase choke
- THT terminals or wire leads
- Flange for mounting onto printed circuit board
- Fully potted resin

Standards

- EN 60938
- IEC 60950
- T.2
- VDE 0565

Applications

- Attenuation of common mode interferences
- May also be used in direct current applications where magnetic compensation is required
- Designed for 230/400 VAC applications

References

[General Product Information](#)

Weblinks

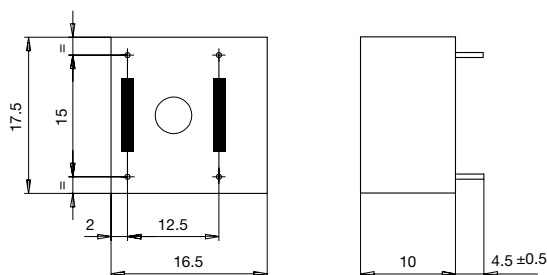
[Approvals](#), [RoHS](#), [CHINA-RoHS](#), [e-Store](#), [SCHURTER-Stock-Check](#), [Distributor-Stock-Check](#)

Technical Data

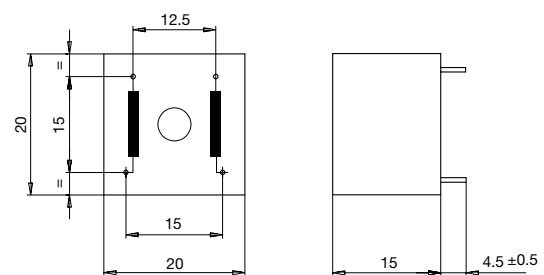
| | | | |
|---------------------------|---------------------------|---------------------------|--|
| Rated Voltage | up to 440 VAC | Test Voltage | 1.8kV, 50Hz, 1 min, winding to winding |
| Rated Current | 0.5 - 15 A @ Ta 40 °C | Isolation Voltage | 2 kV eff., winding to ambient |
| Rated inductance | 1 - 20 mH, Tol. -30% +50% | Climatic Category | 25/100/21 acc. to IEC 60068-1 |
| Power Operating Frequency | 50 - 400 Hz | Allowable Operation Temp. | -25 °C to 100 °C |
| Terminal technic | THT, Flexible wire | | |
| Weight | 6 - 163 g | | |
| Material: Housing | UL 94V-0 | | |
| Sealing Compound | UL 94V-0 | | |

Dimensions

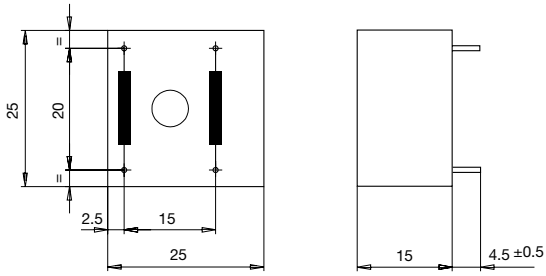
Case 03



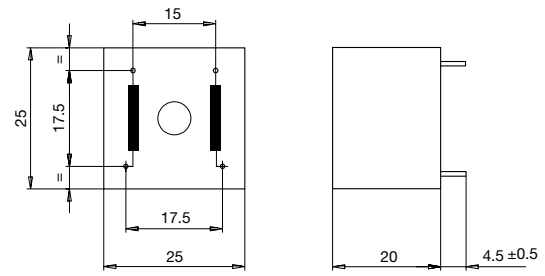
Case 07



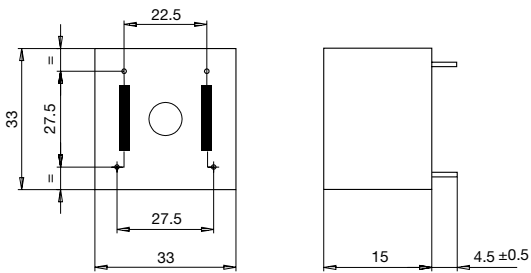
Case 11



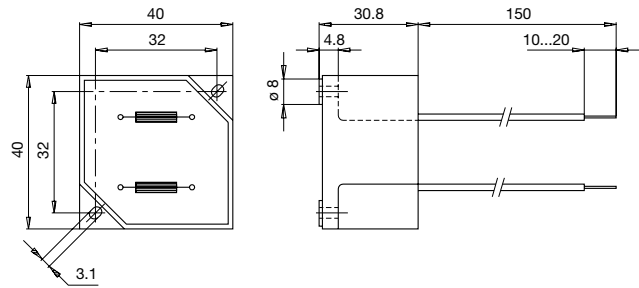
Case 12



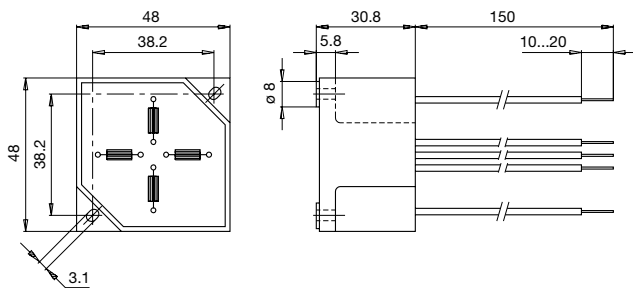
Case 20



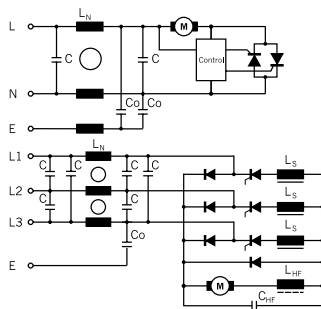
Case 25-2



Case 29-4



Diagrams



LN: Radio interference suppression choke (magnetically compensated DF)

LS: Radio interference suppression choke (magnetically saturated DFS/DFL)

Variants

[Distributor-Stock-Check](#) | [SCHURTER-Stock-Check](#) | [e-Store](#)

| I_n [A] | L_n [mH] | R_{Cu} [m Ω] | f_{RES} [MHz] | Copper ϕ [mm] | Weight [g] | Case | Packing unit [pcs.] | Order Number |
|-----------|------------|------------------------|-----------------|--------------------|------------|------|---------------------|--------------|
| 0.5 | 10 | 900 | 0.5 | 0.5 | 6 | 03 | 100 | DFK-175-0001 |
| 1 | 20 | 500 | 0.5 | 0.6 | 12 | 07 | 150 | DFK-20-0002 |
| 1 | 10 | 500 | 0.7 | 0.6 | 12 | 07 | 150 | DFK-20-0001 |
| 1 | 10 | 510 | 0.5 | 0.6 | 18 | 11 | 50 | DFK-25-0001 |
| 2 | 20 | 250 | 0.3 | 0.6 | 37 | 20 | 45 | DFK-33-0001 |
| 2 | 10 | 250 | 0.5 | 0.6 | 18 | 12 | 50 | DFK-25-0002 |
| 3 | 10 | 150 | 0.38 | 0.6 | 37 | 20 | 45 | DFK-33-0002 |
| 6 | 4 x 1.5 | 20 | 0.2 | 1.5 x | 163 | 29-4 | 10 | DFK-48-0008 |
| 6 | 4 | 27 | 0.4 | - | 127 | 25-2 | 10 | DFK-40-0003 |
| 10 | 2 | 9 | 1.45 | - | 127 | 25-2 | 10 | DFK-40-0004 |
| 15 | 1 | 10 | 1.45 | 2.5 x | 127 | 25-2 | 10 | DFK-40-0005 |